

BridgePath Assisted Living

*Quality Christian Memory Care & Advanced Assisted Living Services
for Seniors age 55 or older*

(A ministry of Morrow Home Community)

503 S. Water Street, Sparta, WI 54656

(608) 269-3168



Rates and Services

Effective June 1, 2018

Monthly Fees:

Memory Care: \$4785

Advanced Assisted Living: \$4585

Additional services available for an additional charge:

+Beautician +Medical-adaptive equipment +Transportation +On site PT & OT

The monthly rate will include the following services and amenities:

- | | |
|---|---|
| <ul style="list-style-type: none"> † Private, comfortable living accommodations with full bathroom † Inviting living room with fireplace and other private lounges † Relaxing dining room with family kitchen serving nutritious meals and snacks † Outdoor courtyard and walking spaces † Security & Wireless Help Call System with 24 hour Emergency Response staff † Regular blood-pressure & weight checks † Welcome to attend Morrow Home activities - Indoor access † Scheduled religious services † No barrier "European" showers | <ul style="list-style-type: none"> † All heat, electricity, and utility needs with standard TV hook-up † Laundry services † Weekly housekeeping services † Beauty/Barber Shoppe available † Private dining room † Guest room for visitors on campus † Christian philosophy of caring and services † Staff assistance with personal cares † Medication management including distribution † On-Site Nurse Care Coordinator † Whirlpool bathing † Motivating Activities † Inside Access to MaryCrest and Homestead Apartments |
|---|---|

Assisted living evaluations are conducted before admission and when needed.

New rates will be reviewed annually with adjustments being effective the 1st of January.

Please Note: Financial assistance may be available through a publicly funded program.

Please call Wisconsin Family Cares Program at 800-500-3910.

No Pets Please.

Contact our Housing Coordinator at (608) 366-6293, or our

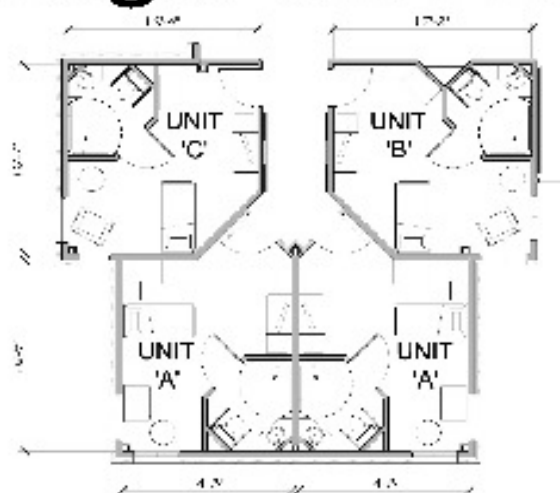
Director of Adult Living Services at (608) 366-6288

for further information and a personal tour.

BridgePath is a Wisconsin licensed Community Based Residential Facility (CBRF)



BridgePath Floorplans

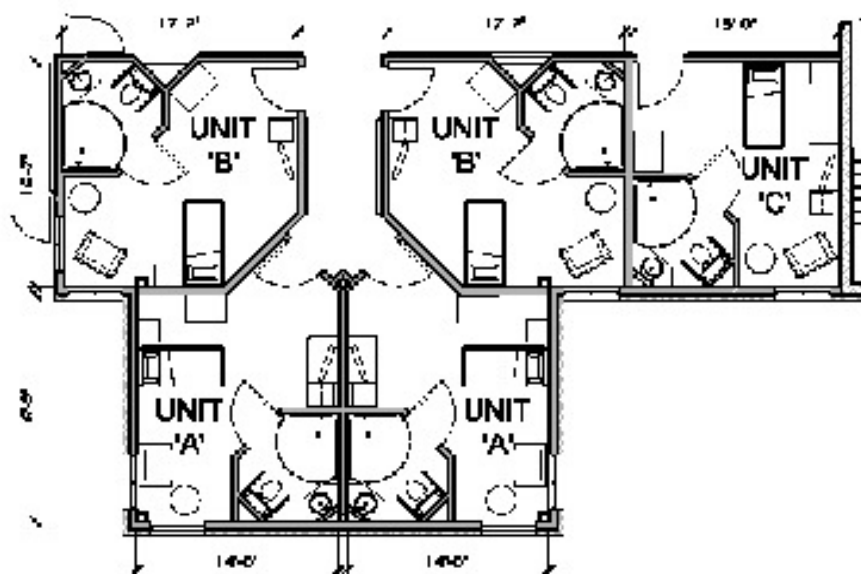


HOUSEHOLD OF 4 LIVING ACCOMMODATIONS

SCALE: 1/8" = 1'-0"

**1st Floor
Memory Care
2nd Floor
Advanced
Assisted Living
Both floors
Identical Layout**

Unit A is 263 sq. ft. / Unit B is 262 sq. ft. / Unit C is 256 sq. ft.



HOUSEHOLD OF 5 LIVING ACCOMMODATIONS

SCALE: 1/8" = 1'-0"

Unit A is 263 sq. ft. / Unit B is 262 sq. ft. / Unit C is 248 sq. ft.